

# Kent Community Energy

JULY 2020 NEWSLETTER

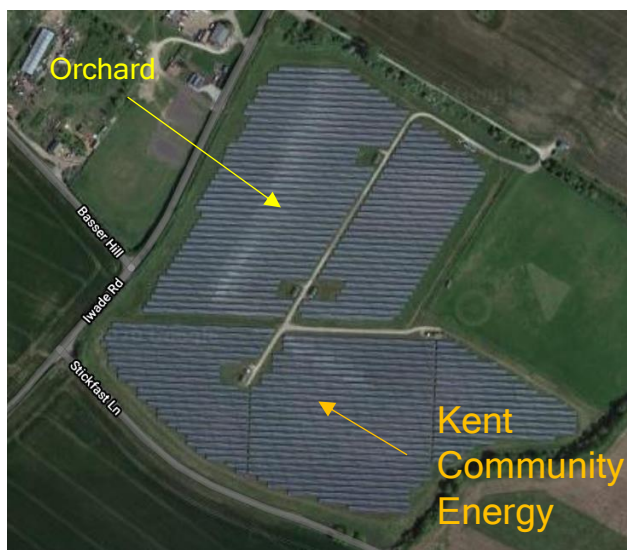


An energetic  
hello from  
the society  
to all the  
renewable  
energy  
enthusiasts  
of Kent!

## Welcome from the team

We are writing to introduce Kent Community Energy and invite all in Kent who have an interest in sustainable energy and climate resilience to join us. Our working group is up and running and we are on course to establish ourselves as a Community Benefit Society by early 2021.

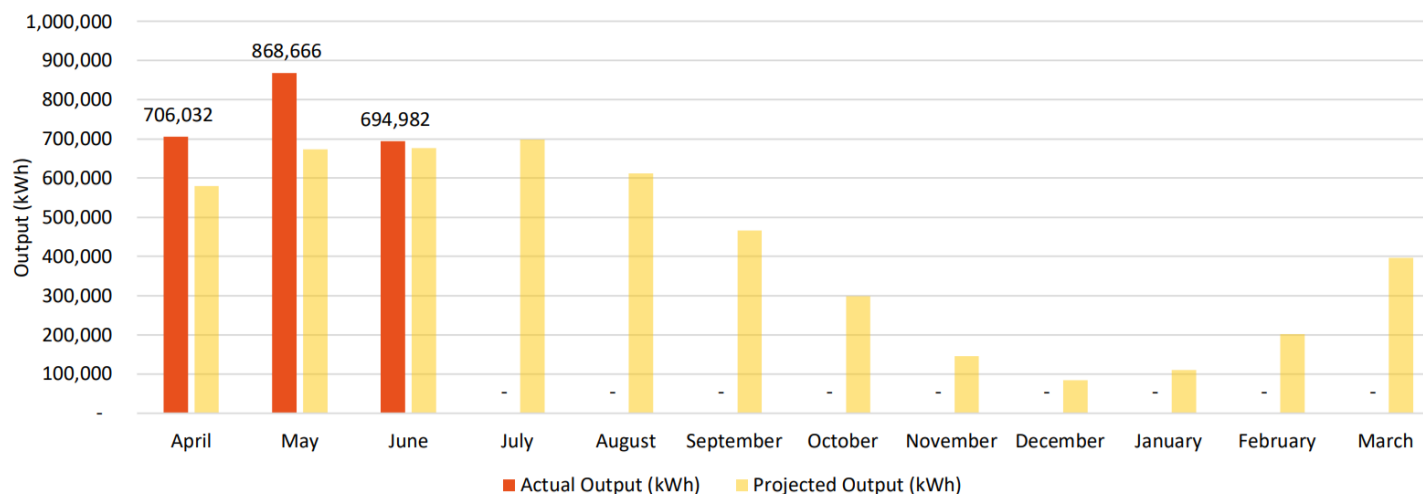
Our ambition is that the second of the twin 5 Megawatt solar arrays located near Sittingbourne should be brought into full community ownership and its profits used to develop other community projects across the area served by Kent County Council.



Source: Google Maps

## Reinvesting back in the community

Each array has the capacity to power 1600 homes with zero carbon electricity. Below you can see a snippet from this summer's report showing the solar farm energy output exceeding expectations.



Source: Orchard Farm Community Solar 2 CIC

Both arrays are delivering at above the projected level at present. The income from this has been used to support a range of charity projects.

This year Orchard Community Energy, our established sister organisation, distributed £36,199 on behalf of Kent Community Energy to these eight groups across Kent made additionally vulnerable by COVID-19. A further £10,000 is yet to be allocated by Kent Community Energy from this year.

Find out more about them by following the links below. We shall report fully on how they used the grants in our next newsletter.



<http://hythecivicsociety.org/updates/index.php/home/>

### The Folkestone Youth Project

Registered charity number: 1113379

<https://www.totalgiving.co.uk/charity/the-folkestone-youth-project>



<https://canterburyumbrella.co.uk>



**Samphire**

<https://www.samphireproject.org.uk>



<https://emmaus.org.uk/dover/emmaus-dover-receives-5000-from-the-kent-community-energy/>



<https://www.abbeyphysic.org>



<https://www.familyfoodbank.org>



<https://sateda.org>



Centre for Sustainable Energy, CSE  
<https://www.cse.org.uk>



Community Owned Renewable Energy, CORE  
<https://www.corepartners.org.uk>



Power to Change (PtC)  
<https://www.powertochange.org.uk>



Next Generation (NextGen)  
<https://www.next-generation.org.uk/about>



Big Society Capital, BSC  
<https://bigsocietycapital.com>

## We couldn't do it without our partners

The finance and other expertise to make this happen, with continuing support, comes via the Community Owned Renewable Energy (CORE) Consortium.

CORE has gathered a small group of UK community energy providers together, which brings reduced rates of interest on finance capital and cross fertilization of ideas.

A range of established and respected social enterprise and charitable organisations support CORE with community grant finance, training and consultancy. You can see them alongside with their acronyms and links to their websites

The remaining finance to enable us to purchase our solar farm will come from our share offer. This is planned for early 2021 on the basis of one member one vote, regardless of the size of the investment. We hope to provide returns to investors in the region of 4% interest.



Environmental Finance, EF  
<https://www.environmentalfinance.co.uk/>

## Do you want to join us?

Any individual or organisation based in Kent with a passion for the growth of sustainable community energy and climate resilience can get involved.

Investors in our shares become members who have one vote each at our AGM.

We have a working group with a range of skills and experience that allows us to proceed with confidence and welcome new volunteers.

We would particularly encourage involvement from BAME communities and those engaged in managing fuel poverty.

We welcome every new joiner. To get the most out of the society you will only need a passion for building a sustainable energy future for Kent.

### Our aims and reach

#### In the county of Kent we will

Work toward a fair transition to sustainable living for communities through the establishment of community benefit societies






Accelerate Kent's transition to climate resilience and net zero carbon

Support community energy and resilience initiatives with financial, organisational and technical expertise

Create a culture of mutual trust and benefit

Champion diversity of involvement in community energy

## The society will offer you possibilities to

-  develop your own community benefit society or support a local CBS as a volunteer
-  power up with clean energy or power down your property, business or charity
-  act as a champion for community energy within your own organisation or community
-  consider investing in our share offer as an individual or organisation
-  seek support or advice on personal or organisational energy initiatives

If you would like to become involved or learn more please get in touch and tell us your interests at

 [next-generation@cse.org.uk](mailto:next-generation@cse.org.uk)



Driving Kent county to a renewable energy future



<http://kentcommunityenergy.org/>



[https://twitter.com/kent\\_commenergy](https://twitter.com/kent_commenergy)